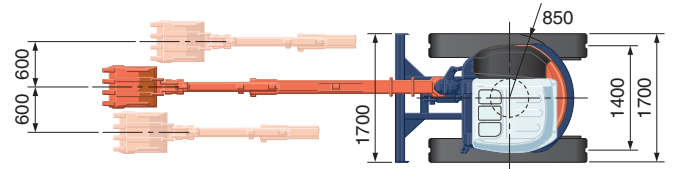
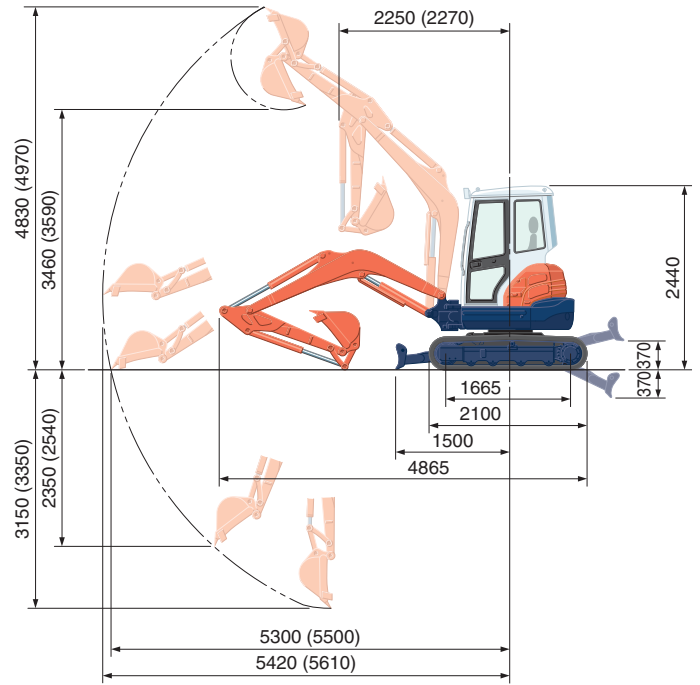


SPECIFICATIONS

*Rubber shoe type

Machine weight	Cabin	kg	3590
	Canopy	kg	3480
Bucket capacity, std. SAE/CECE		m ³	0.11/0.10
Bucket width	With side teeth	mm	575
	Without side teeth	mm	550
Engine	Model		D1503-M-EBH-4-EC-N
	Type		Water-cooled, diesel engine E-TVCS (Economic, ecological type)
	Output ISO9249	PS/rpm	27.5/2300
		kW/rpm	20.3/2300
	Number of cylinders		3
	Bore × Stroke		mm
Displacement		cc	1499
Overall length		mm	4865
Overall height	Cabin	mm	2440
	Canopy	mm	2440
Swivelling speed		rpm	8.9
Rubber shoe width		mm	300
Tumbler distance		mm	1665
Dozer size (width × height)		mm	1700 × 335
Hydraulic pumps	P1, P2		Variable displacement pump
	Flow rate	ℓ/min	40 + 40
	Hydraulic pressure	MPa (kgf/cm ²)	24.5 (250)
	P3		Gear type
	Flow rate	ℓ/min	21
	Hydraulic pressure	MPa (kgf/cm ²)	19.6 (200)
Max. digging force	Arm	kN (kgf)	18.3 (1870)
	Bucket	kN (kgf)	31.1 (3180)
Boom swing angle (left/right)		deg	70/50
Auxiliary circuit	Flow rate	ℓ/min	40
	Hydraulic pressure	MPa (kgf/cm ²)	24.5 (250)
Hydraulic reservoir		ℓ	36
Fuel tank capacity		ℓ	41.5
Max. travelling speed	Low	km/h	3.0
	High	km/h	4.6
Ground contact pressure	Cabin	kPa (kgf/cm ²)	33.0 (0.34)
	Canopy	kPa (kgf/cm ²)	32.0 (0.33)
Ground clearance		mm	290

WORKING RANGE



(): Long Arm
Unit: mm

LIFTING CAPACITY

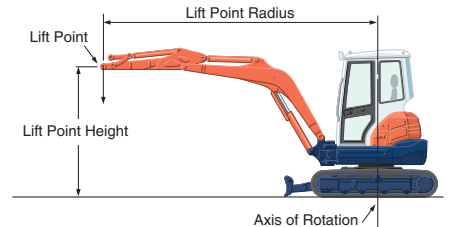
*With cabin, rubber shoe and standard arm
kN (ton)

Lift Point Height	Lifting point radius (1.5m)			Lifting point radius (3m)			Lifting point radius (4.5m)		
	Over-front		Over-side	Over-front		Over-side	Over-front		Over-side
	Blade Down	Blade Up		Blade Down	Blade Up		Blade Down	Blade Up	
3m	-	-	-	-	-	-	-	-	-
2m	-	-	-	9.0 (0.92)	8.9 (0.91)	8.3 (0.85)	7.4 (0.76)	4.7 (0.48)	4.4 (0.45)
1m	-	-	-	12.4 (1.27)	8.3 (0.84)	7.7 (0.79)	7.9 (0.81)	4.6 (0.47)	4.3 (0.44)
0m	-	-	-	14.3 (1.46)	7.9 (0.80)	7.3 (0.75)	8.2 (0.84)	4.5 (0.46)	4.2 (0.43)
-1m	20.6 (2.10)	20.6 (2.10)	20.6 (2.10)	13.8 (1.40)	7.8 (0.79)	7.2 (0.74)	-	-	-
-2m	24.7 (2.52)	24.7 (2.52)	23.9 (2.44)	10.0 (1.02)	7.9 (0.81)	7.4 (0.75)	-	-	-

Please note:

* The lifting capacities are based on ISO 10567 and do not exceed 75% of the static tilt load of the machine or 87% of the hydraulic lifting capacity of the machine.

* The excavator bucket, hook, sling and other lifting accessories are not included on this table.



* Working ranges are with Kubota standard bucket, without quick coupler.

* Specifications are subject to change without notice for purpose of improvement.

KUBOTA (U.K.) LTD

Dormer Road, Thame, Oxfordshire,
OX93UN, U.K.

Phone : 01844-268140

F a x : 01844-216685