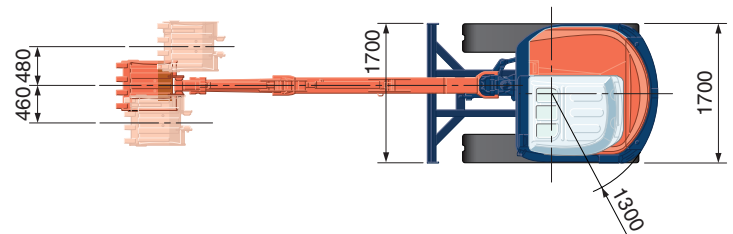
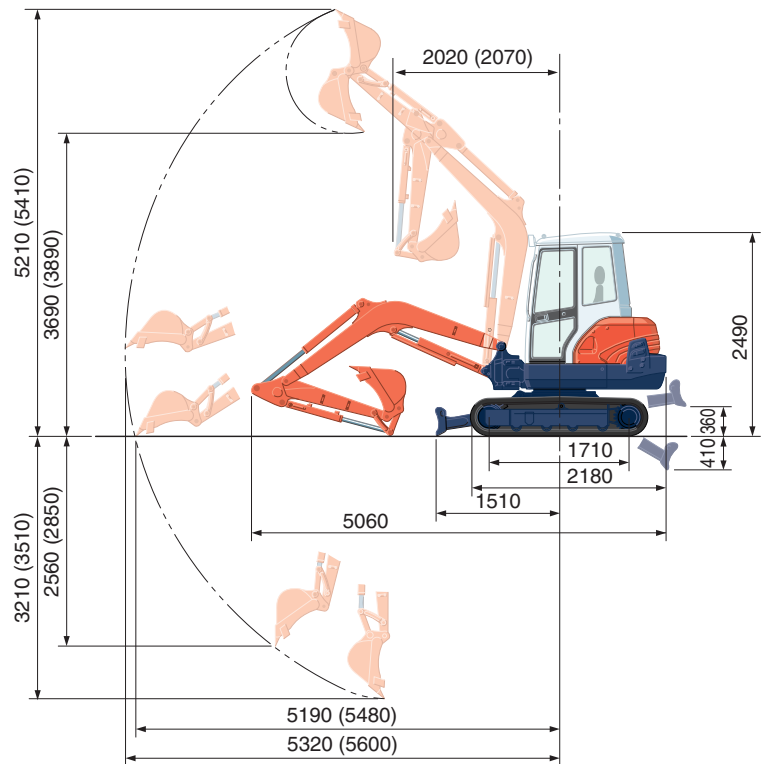


SPECIFICATIONS

*Rubber shoe type				
Machine weight	Cabin	kg	3980	
Bucket capacity, std. SAE/CECE		m ³	0.12/0.11	
Bucket width	With side teeth	mm	624	
	Without side teeth	mm	600	
Engine	Model	V2203-M-EBH-2-N		
	Type	Water-cooled, diesel engine E-TVCS (Economical, ecological type)		
	Output ISO9249	PS/rpm	40/2250	
		kW/rpm	29.4/2250	
	Number of cylinders	4		
	Bore × Stroke	mm	83 × 92.4	
Displacement	cc	2197		
Overall length		mm	5060	
Overall height	Cabin	mm	2490	
Swivelling speed		rpm	9.4	
Rubber shoe width		mm	350	
Tumbler distance		mm	1710	
Dozer size (width × height)		mm	1700 × 350	
Hydraulic pumps	P1	Variable displacement pump		
	Flow rate	ℓ/min	94.5	
	Hydraulic pressure	MPa (kgf/cm ²)	24.5 (250)	
Max. digging force	Arm	kN (kgf)	20.5 (2095)	
	Bucket	kN (kgf)	32.5 (3315)	
Boom swing angle (left/right)		deg	80/50	
Auxiliary circuit	Flow rate	ℓ/min	60	
	Hydraulic pressure	MPa (kgf/cm ²)	24.5 (250)	
Hydraulic reservoir		ℓ	44	
Fuel tank capacity		ℓ	64	
Max. travelling speed	Low	km/h	3.0	
	High	km/h	5.0	
Ground contact pressure	Cabin	kPa (kgf/cm ²)	29.8 (0.304)	
Ground clearance		mm	330	

WORKING RANGE



(): Long Arm
Unit: mm

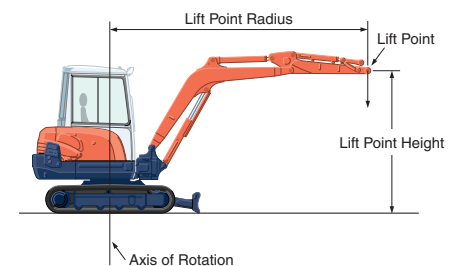
LIFTING CAPACITY

Lift Point Height	Lifting point radius (3m)			Lifting point radius (4m)		
	Over-front		Over-side	Over-front		Over-side
	Blade Down	Blade UP		Blade Down	Blade UP	
3m	9.2 (0.94)	9.2 (0.94)	9.2 (0.94)	9.1 (0.93)	8.1 (0.83)	7.4 (0.75)
2m	11.8 (1.20)	11.8 (1.20)	11.0 (1.13)	9.6 (0.98)	8.0 (0.82)	7.2 (0.74)
1m	14.9 (1.52)	11.7 (1.19)	10.4 (1.06)	10.7 (1.09)	7.8 (0.79)	7.0 (0.71)
0m	16.3 (1.66)	11.3 (1.15)	10.0 (1.02)	11.2 (1.15)	7.6 (0.77)	6.8 (0.70)

Please note:

* The lifting capacities are based on ISO 10567 and do not exceed 75% of the static tilt load of the machine or 87% of the hydraulic lifting capacity of the machine.

* The excavator bucket, hook, sling and other lifting accessories are not included on this table.



* Working ranges are with Kubota standard bucket, without quick coupler.

* Specifications are subject to change without notice for purpose of improvement.

KUBOTA (U.K.) LTD

Dormer Road, Thame Oxfordshire,
OX93UN, U.K.
Phone : 01844-268140
F a x : 01844-216685