

MANISCOPIC

MLT 741



- Lift Capacity: 8,000 lb.
- Maximum Lift Height: 22 ft. 7 in.
- Maximum Forward Reach: 13 ft. 2 in.
- Perkins 123 HP Engine
- Torque Converter
- Four Wheel Drive
- Three Steering Modes

 **MANITOU**[®]

MLT 741-120 LSU Turbo



Lift Capacity:

Maximum (24 in. load center)8,000 lb.
Break out force on bucket teeth
with tilting ram (ISO 8313)12,477 lb.



Lift Height:

Maximum lift height22 ft. 7 in.
Maximum forward reach13 ft. 2 in.
Times: unladen / loaded (in sec)



Tires:

.....17.5LR24XM27



Forks:

Length48 in.
Thickness/width2.25 in. x 4 in.
Maximum distance between forks40 in.
Carriage rotation146°



Brakes:

.....Multidisc - hydraulically assisted on four wheels



Engine:

TypePerkins 1104C-44TA Turbo Diesel
Capacity4 cyl. 268 cu. in.
Power123 HP/90.5 kw
Maximum Torque320 ft.lb. at 1400 rpm
InjectionDirect
CoolingWater



Transmission:

TypeTorque Convertor
Electro-hydraulic reversing shift
Speeds forward/reverse4/4
Maximum travel speed21 mph



Hydraulics:

PumpPiston type
Flow3900 PSI - 40 gpm
Flow divider with priority to steering and braking



Capacities:

Cooling system4.9 gal.
Engine oil2.9 gal.
Transmission oil4 gal.
Hydraulic oil33 gal.
Fuel tank32 gal.

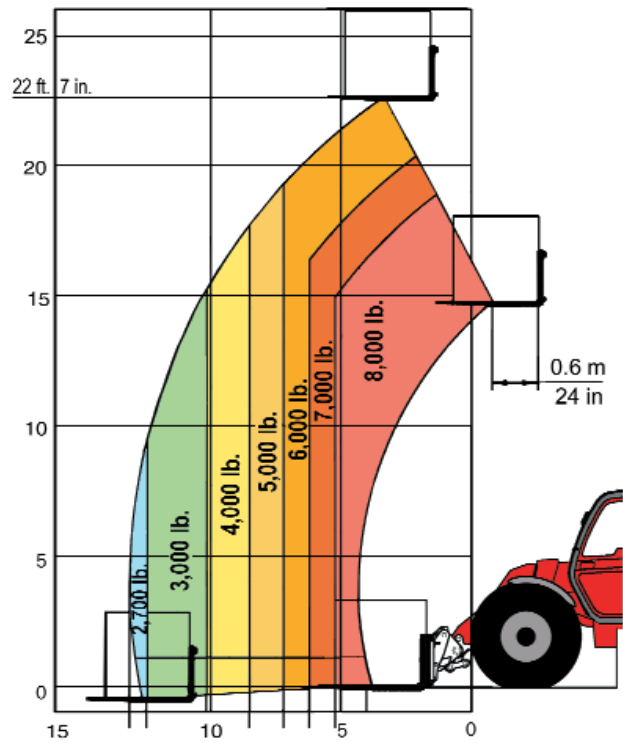


Specifications:

Weight (base unit)15,454 lb.
Turning radius (outside wheels)152 in.
Overall height91 in.
Overall width92 in.
Overall length (without forks)193 in.
Ground clearance17 in.
Maximum drawbar pull20,457 ft.lb.

LOAD CAPACITY CHART

EQUIPPED WITH OPTIONAL 48" CARRIAGE AND FORKS
(OPTIONAL ATTACHMENTS CAN DERATE THIS CHART)



Capacities shown in pounds/feet are the maximum recommended load limits at the indicated extensions of the boom. Capacity ratings are based on a 48" homogeneous cube and are in accordance with ANSI/ASME B56.6 stability standards. Capacity reductions must be made for extended load centers and when used with various other attachments, contact MANITOU NORTH AMERICA, INC.

DIMENSIONS:

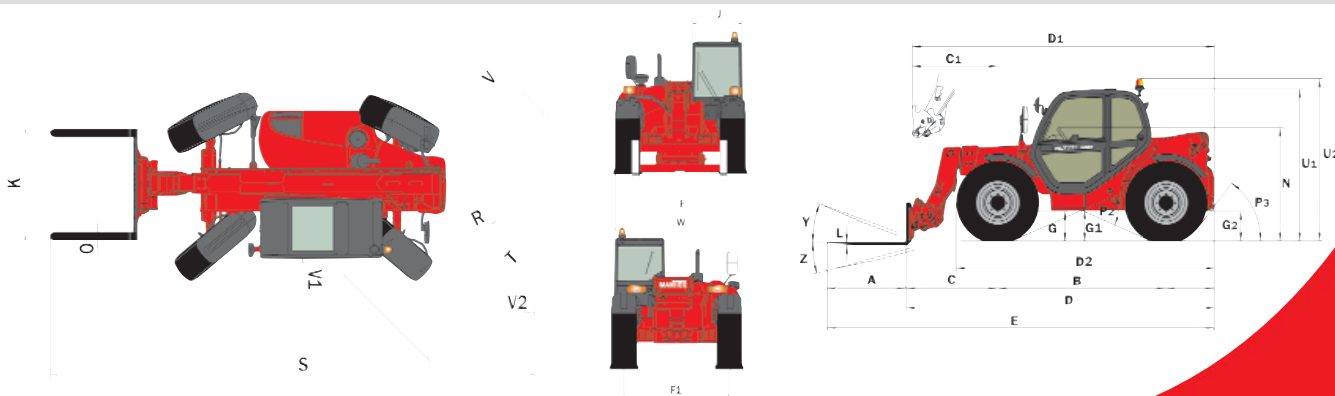
A48	L2
B111	N68
C48	O5
C151	P238°
D193	P353°
D1196	R143
D2169	S303
E241	T143
F74	U191
F174	U2100
G18	V197
G117	V154
G217	V2152
I34	W92
J34	Y12°
K66	Z134°

STANDARD EQUIPMENT:

- Enclosed Cab
- Hydraulic Power Steering
- Three Steering Modes
- Full Time 4 Wheel Drive
- Limited Slip Front Axle
- Three Gear Outer Planetary Hubs
- Hydraulic Oil Cooler
- Adjustable Seat
- Full Instrumentation
- Road Lights
- Horn
- Backup Alarm
- Wet Disc Brakes
- Parking Brake
- Quick Fit Tool System
- Roller Joystick
- Automatic Attachment Levelling
- Hydraulic Lock-out Valves
- Auxiliary Boom Hydraulics
- Left & Right Side Mirrors
- Front, Rear & Roof Windshield Wipers
- Front & Roof Sun Screen
- Front & Rear Work Lights
- Hood Screen Trash Shroud
- Neutral Start Switch
- Tow Pin

OPTIONAL EQUIPMENT:

- A wide variety of attachments and options are available to meet the customer's individual applications



This publication in no way constitutes an offer and the company reserves the right to alter specification without prior notice. The MANITOU models presented in this brochure can be supplied complete with optional equipment attachments.

MANITOU NORTH AMERICA, INC.
P.O. Box 21386
Waco, TX 76702-1386
Tel: 800-433-3304 Fax: 254-799-4433
www.manitou-na.com

